

EQUIP

PALO ALTO. C/ PELLAIRES 30-38 NAU G01 08019 BARCELONA
 T: +34 93 303 46 60 F: +34 93 303 46 65 E: equip@equip.com.es

HOTEL HOTUSA ARC DE TRIOMF 2008-2010 10 030 M2 HOTEL

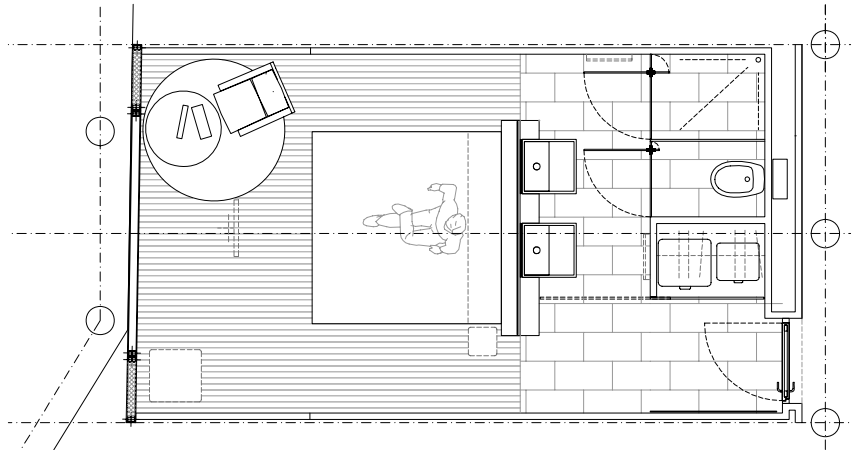
clients Hotusa
 authors EQUIP
 Xavier Claramunt, Martín Ezquerro,
 Pau Rodríguez

collaborators Karim Dehmous, María Soler, Ariadna
 Binefa, Josep Puigdemont, Miquel de
 Mas, José Ahedo, Hilda Compte, Alex
 Ortiz, Carmen Barberà, A-Sophie de
 Vargas, Anna Ramos, Adam Mendoza,
 Oriol Bordes

situation Barcelona
 area 10 030 M2
 budget 25 283 800 €

engineer ENGISA
 structure Consultors BIS Arquitectes
 photographer Adrián Goula

state On site



EQUIP

PALO ALTO. C/ PELLAIRES 30-38 NAU G01 08019 BARCELONA
 T: +34 93 303 46 60 F: +34 93 303 46 65 E: equip@equip.com.es

HOTEL HOTUSA ARC DE TRIOMF 2008-2010 10 030 M2 HOTEL

clients	Hotusa
authors	EQUIP Xavier Claramunt, Martín Ezquerro, Pau Rodríguez
collaborators	Karim Dehmous, María Soler, Ariadna Binefa, Josep Puigdemont, Miquel de Mas, José Ahedo, Hilda Compte, Alex Ortiz, Carmen Barberà, A-Sophie de Vargas, Anna Ramos, Adam Mendoza, Oriol Bordes

situation	Barcelona
area	10 030 M2
budget	25 283 800 €
engineer	ENGISA
structure	Consultors BIS Arquitectes
photographer	Adrián Goula

state	On site
-------	---------