

# Hotel Acta Mimic

C. Arc del Teatre 58-58b - 08001 Barcelona

Area: 4,744 m<sup>2</sup>

**Architect**  
Xavier Claramunt, Martin Ezquerro,  
Pau Rodríguez, Marc Zaballa

**Firm**  
EQUIP Xavier Claramunt

**Collaborator**  
Yago Haro, Miquel de Mas, Joan  
Cuevas, Javier Luri, Ho-Sang, Anne-  
Sophie de Vargas, Oliver Schmidt,  
Carmen Barberà, Vicky Pons, Adam  
Mendoza, Sandra Yubero, Alex Ortiz,  
Hilda Compte, Oriol Bordes, Anna  
Ramos

**Project manager**  
TAG a+m (Jordi Mañas)

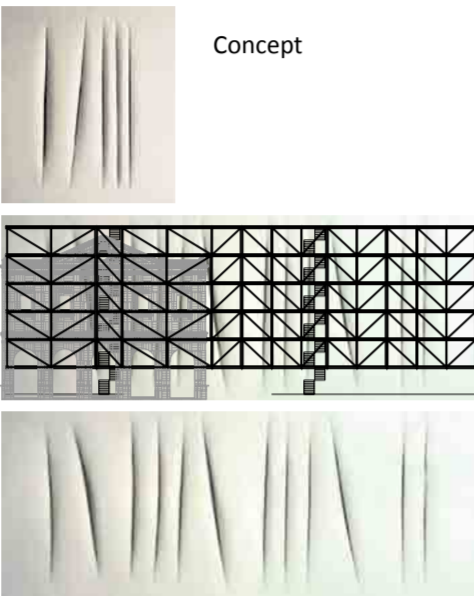
**Façade (artist)**  
Hector Francesc

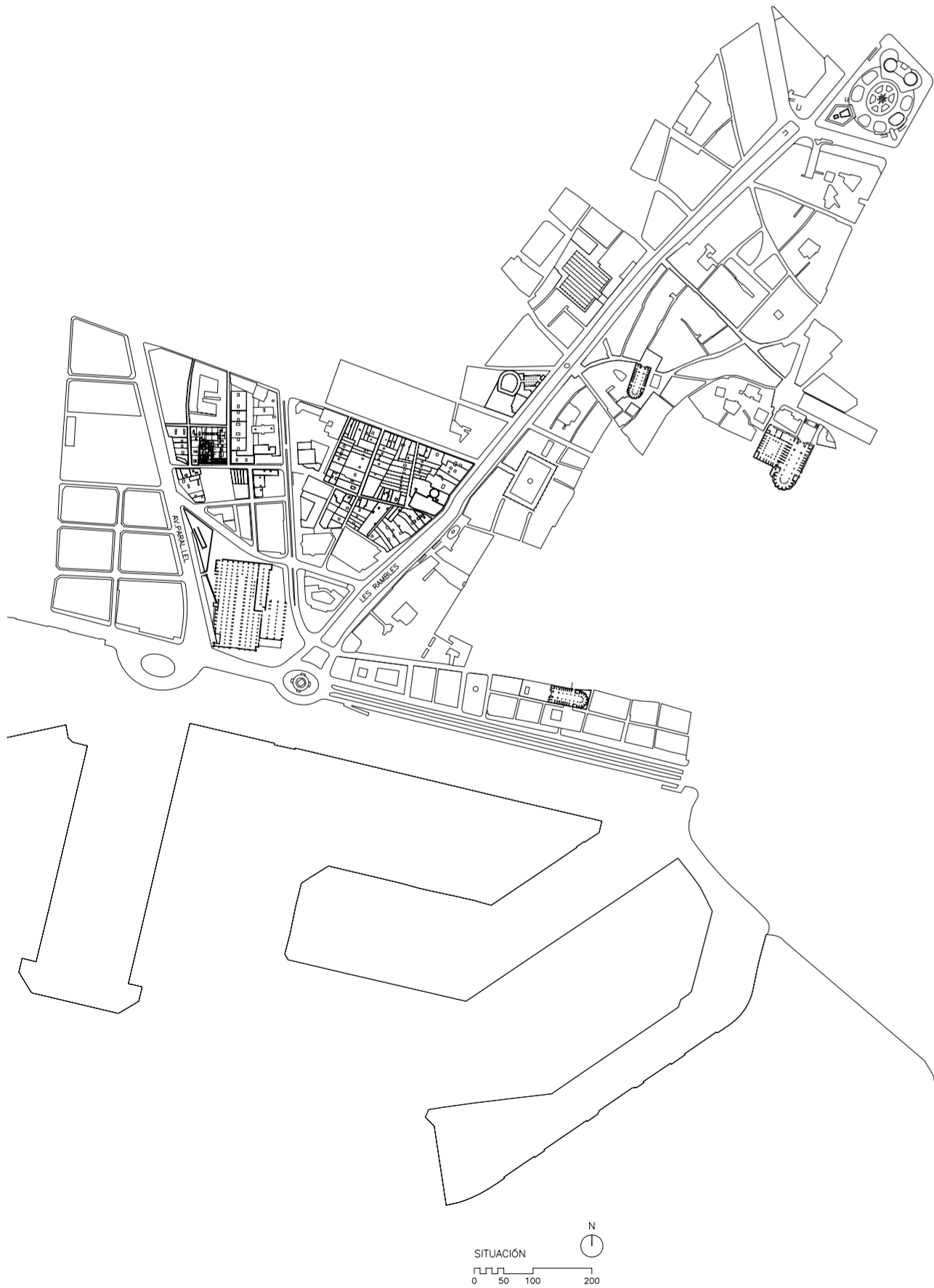
**Foreman**  
Joel Vives

**Engineer**  
Aribau 70 S.L.

**Builder**  
Cycons

**Potographer**  
Adrià Goula





Two classic strategies are initially applied: listening to the place and asking the user. To further define this generality, the architects would say that one listens to the place with one's ears and talks by building between two walls. In other words, the decision was taken to preserve a historic facade, despite the fact that it is not officially protected, and to insert the building between it and the party wall of the adjacent building. The new building treats the rooms as if they were shelves, using wells, a resource borrowed from the selfsame historic buildings of the highly compact old district to afford a dramatic ambience to the common spaces. The relationship of the neat and static facade which would yield, and does yield, a programme of conventional rooms, with the other facades in the area are imbued with a certain complexity and change, using a huge wrap that reflects the changing light of day on the facade of the new building.

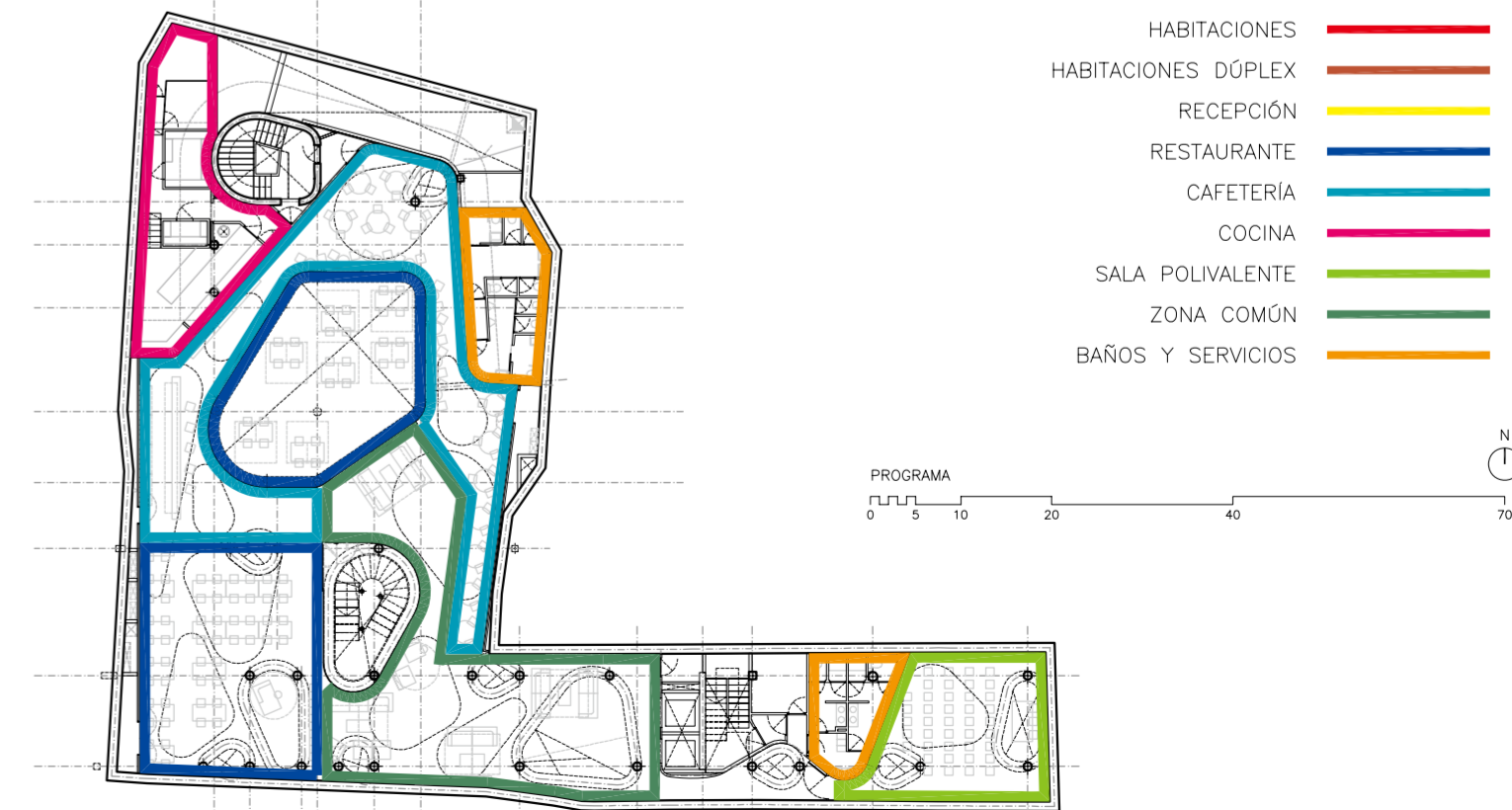
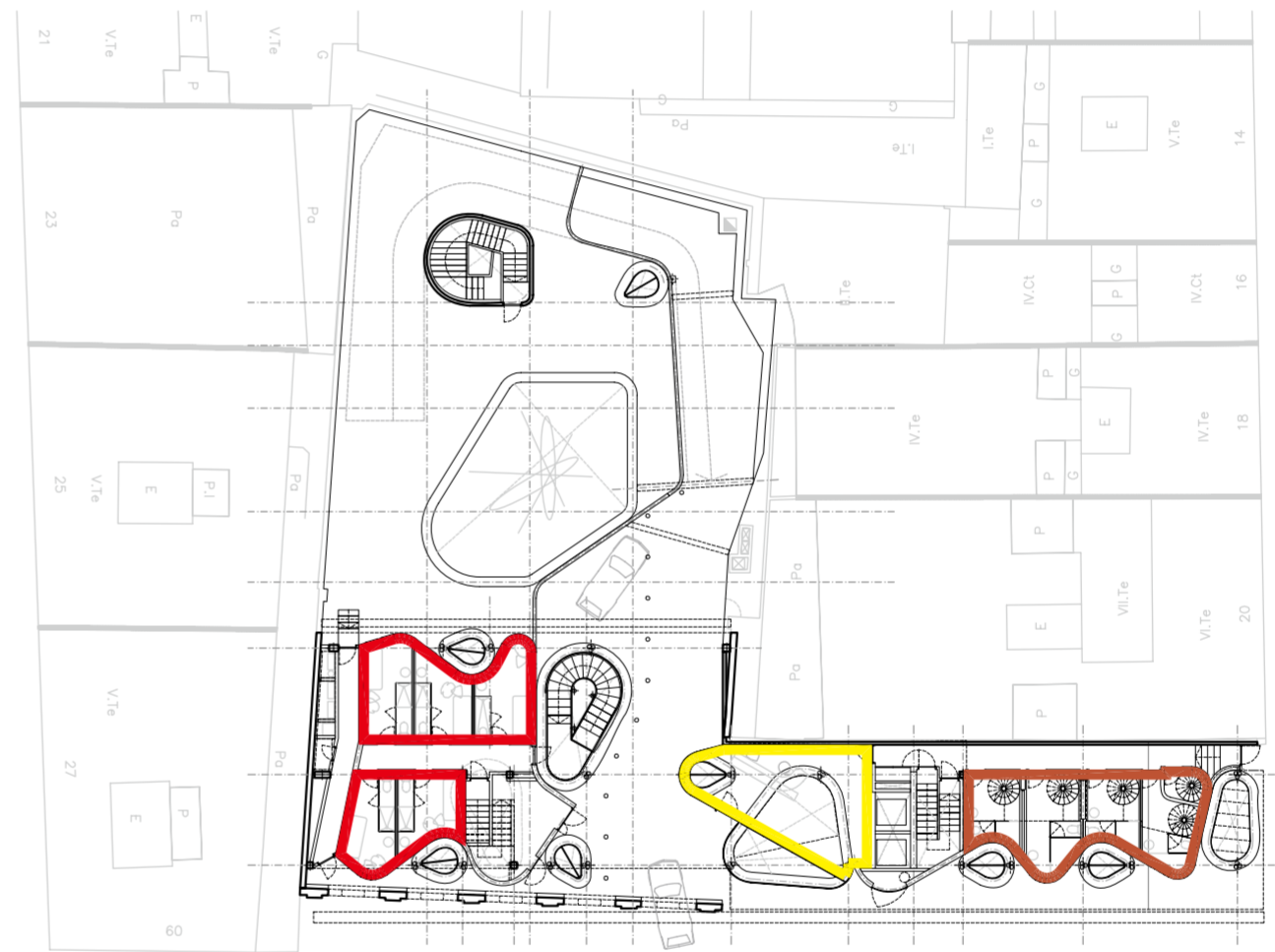
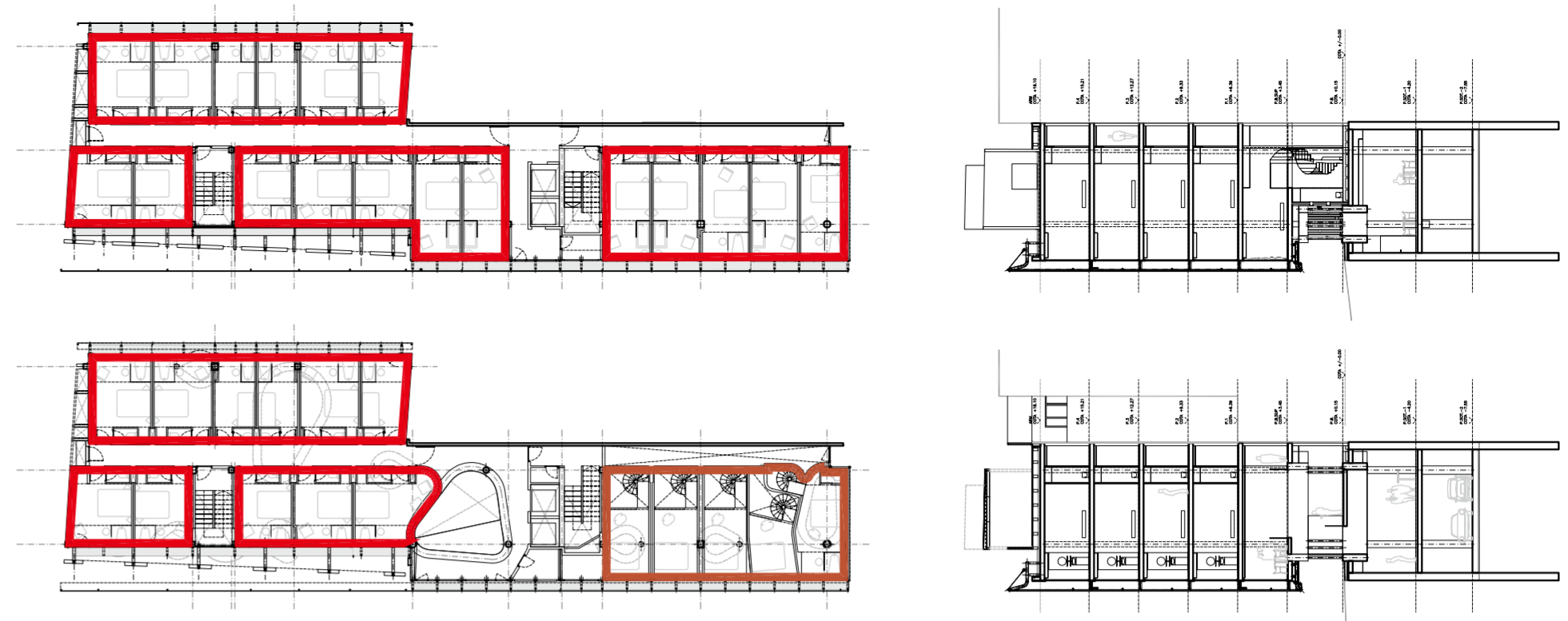
These decisions are all about space, but they are also about integration. Being very sombre and direct, the facade is conserved as a memory of the building that once stood there, but also as a tool for negotiating with the regulations and securing permission, yes sir right away yes sir, making it possible to recess the building on the ground floor, form a porch and open up an inner patio inside the utterly dense maze of streets in the area. Working thus with the legislation will render it possible to locate rooms on the ground floor, in turn solving the conditions of privacy with peculiar clustering systems, with light entering radically and split-level floors.

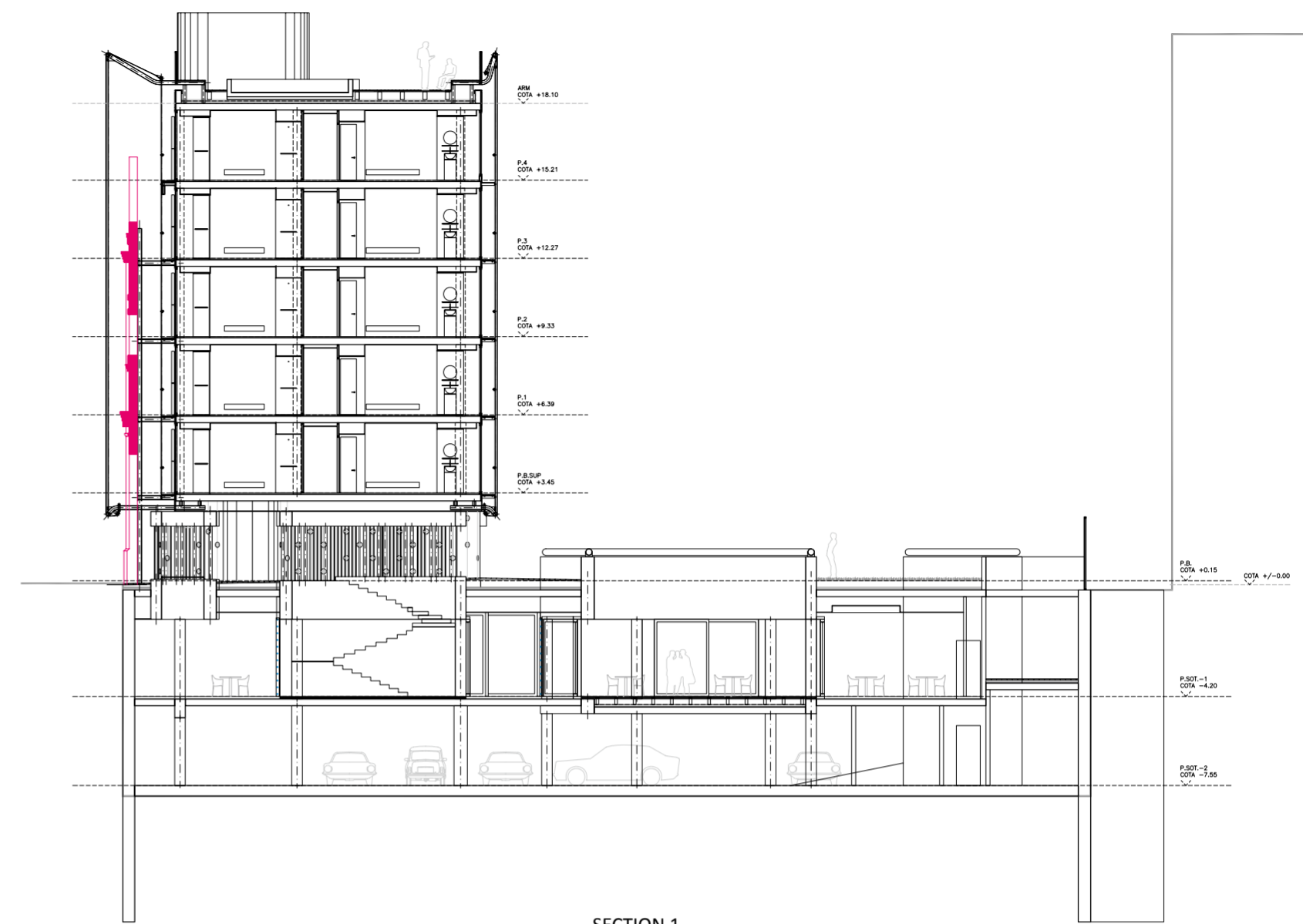
The aim of the huge wrap covering the facade is for the building's appearance to change during the day both from inside the rooms and from the street, while lighting conditions also vary on the inside and on the outside. It is a commitment to integration with the variety of the surrounding buildings. The sobriety and seriation called for by economy of resources applied in the construction of this

building is granted a degree of variety by this huge wrap, which will change with the seasons and will filter the natural light of day differently to the artificial night-time light.

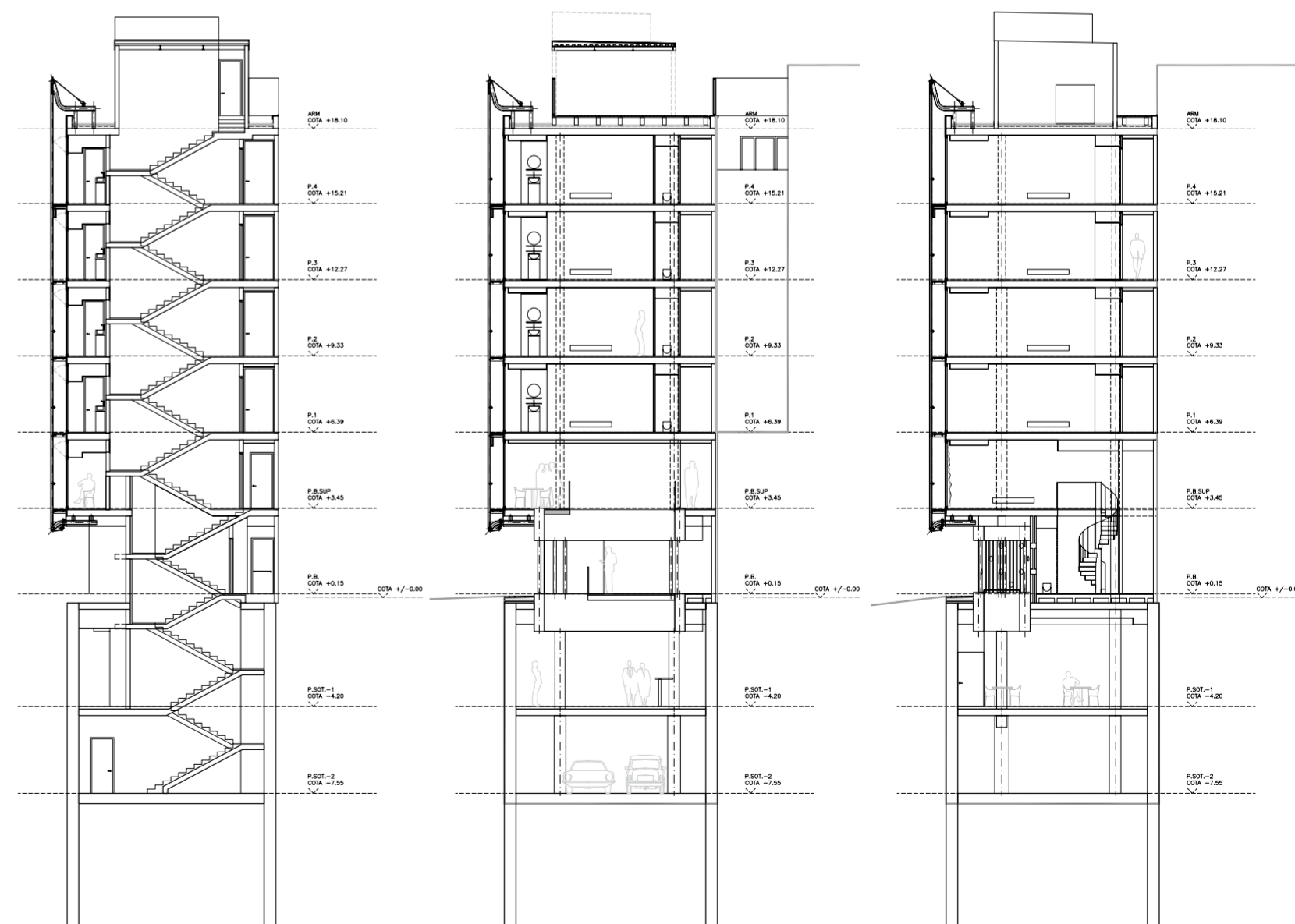
Asking the user, the new hotel has two different miens depending on whether you are in the room or in any one of the common areas. The public areas in the building, below street level, are treated heterogeneously to generate cosy corners and different ambiances. A variety of forms, colours and furniture is offered, as an extension of the street-level dynamism that is not actually within sight. And on the contrary, the rooms are imbued with sobriety to make for easy adaptation to the tourist's decisions. From the inside of the room a direct visual relationship is established with the street through the shower area, located on the facade, and the huge wrap which, with the help of vinyl, protects it from the eyes of the street.



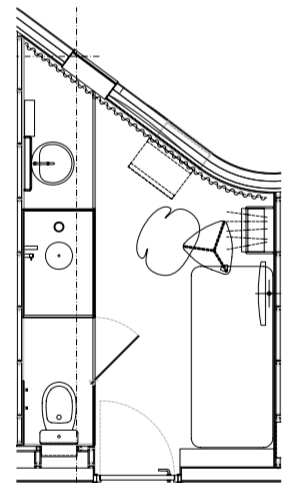




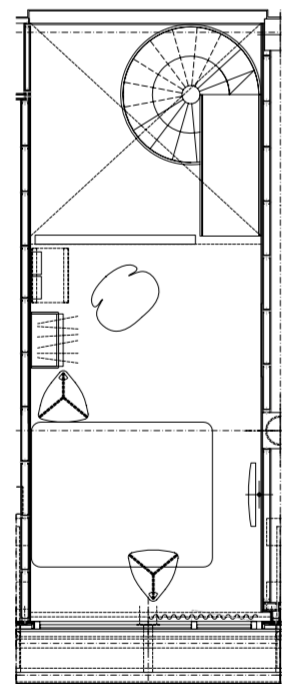
SECTION 1



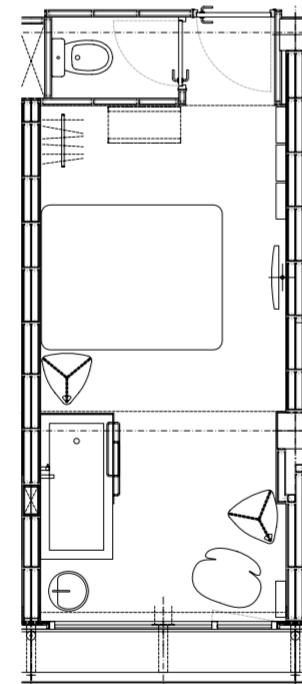
SECTIONS 2 3 4



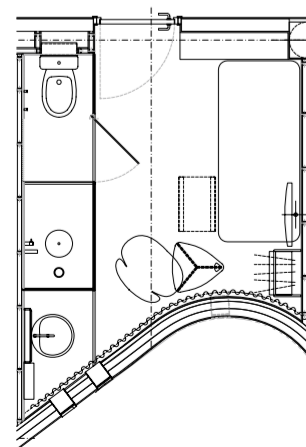
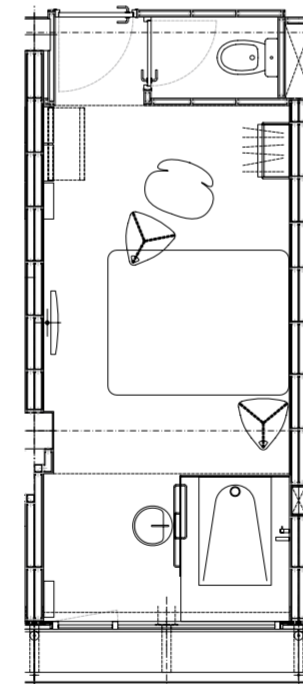
HABITACIÓN PLANTA BAJA



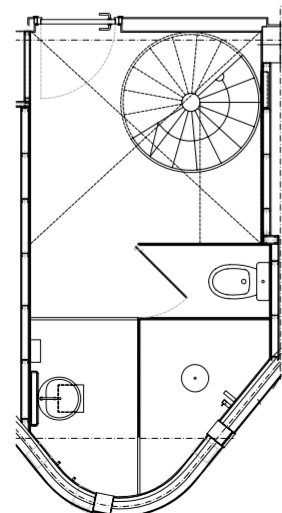
HABITACIÓN TIPO (BAÑERA)



HABITACIÓN TIPO (DUCHA)

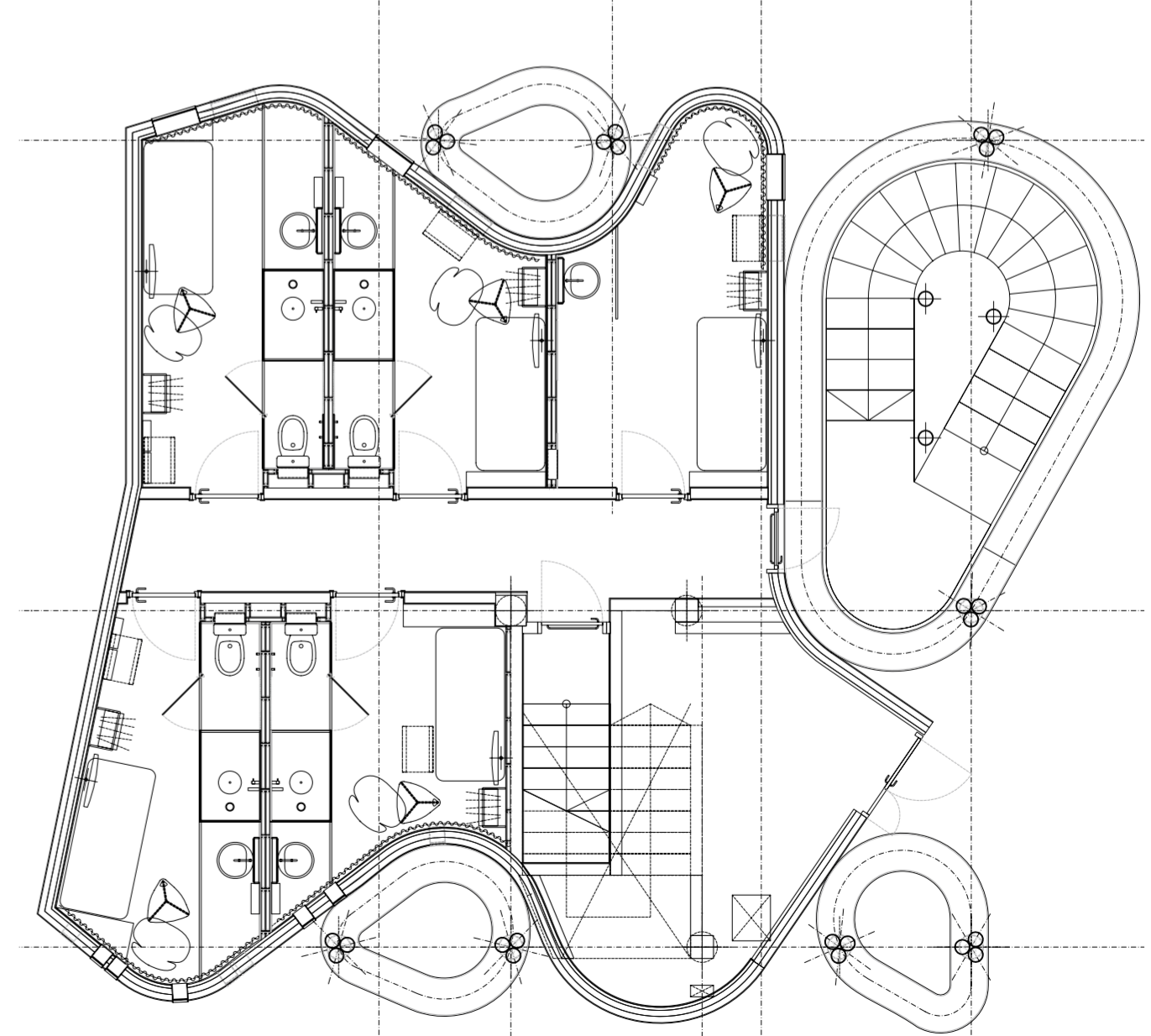


HABITACIÓN PLANTA BAJA

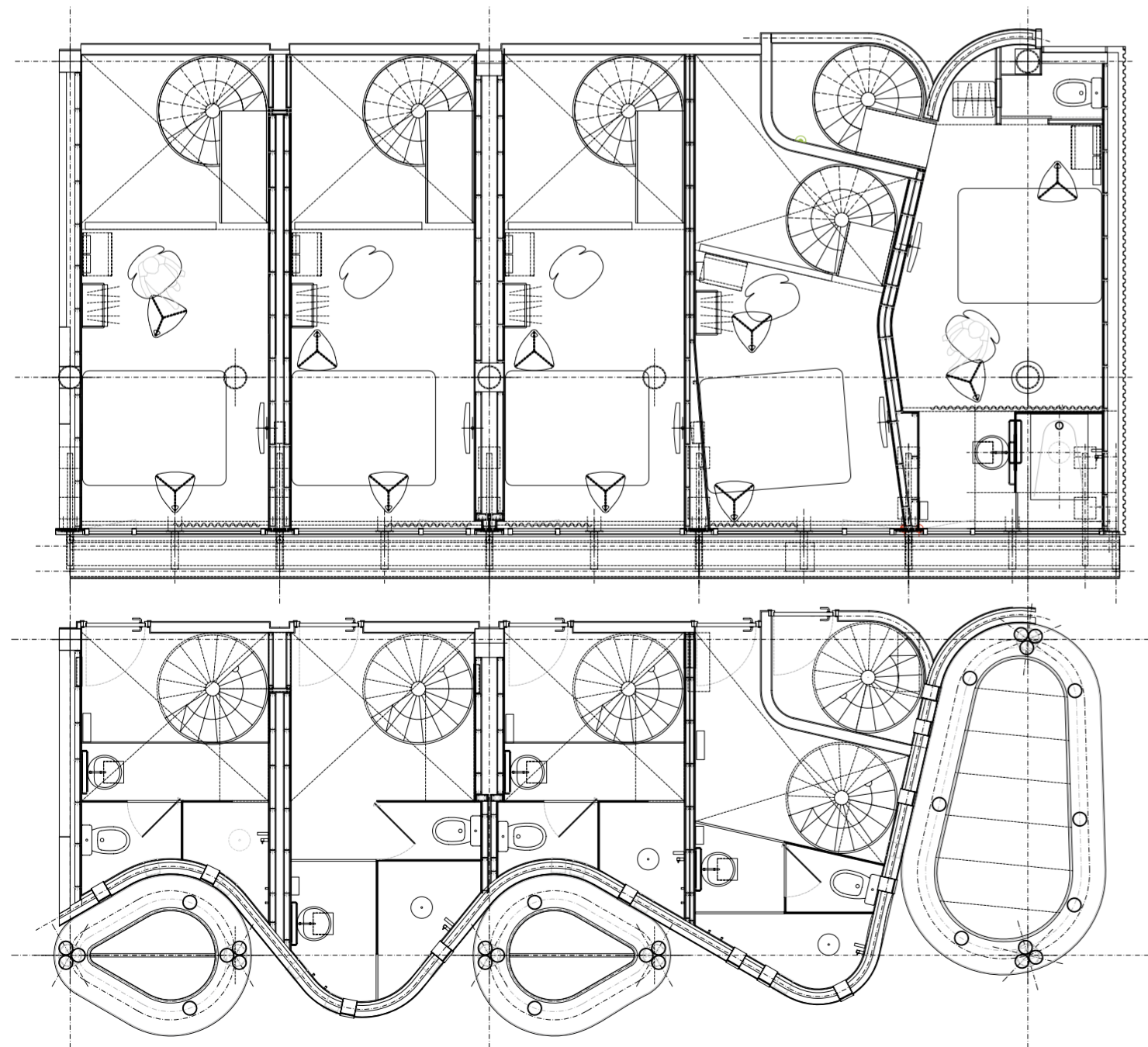
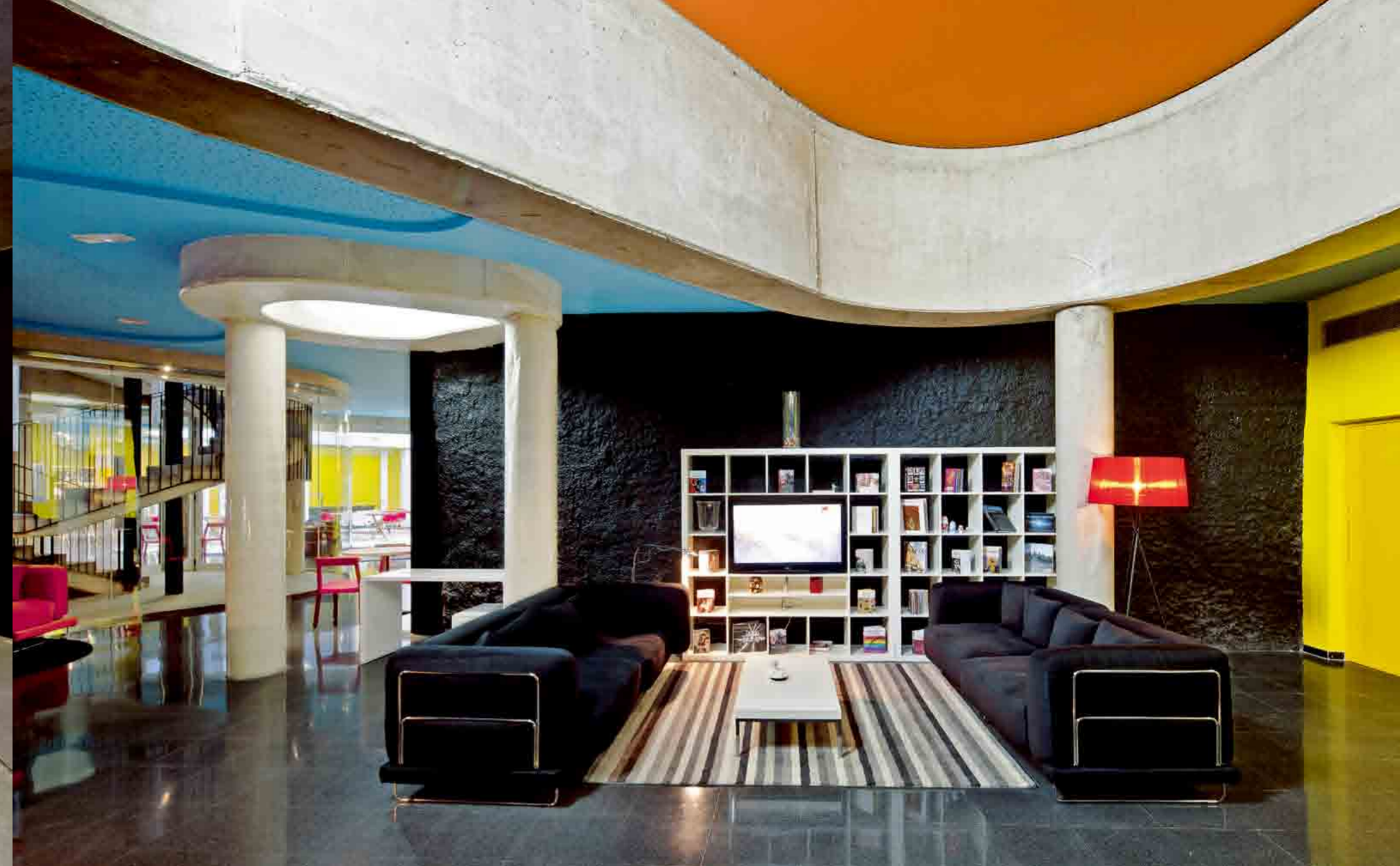


HABITACIÓN DUPLEX

HABITACIONES RESUMEN



HABITACIONES PLANTA BAJA



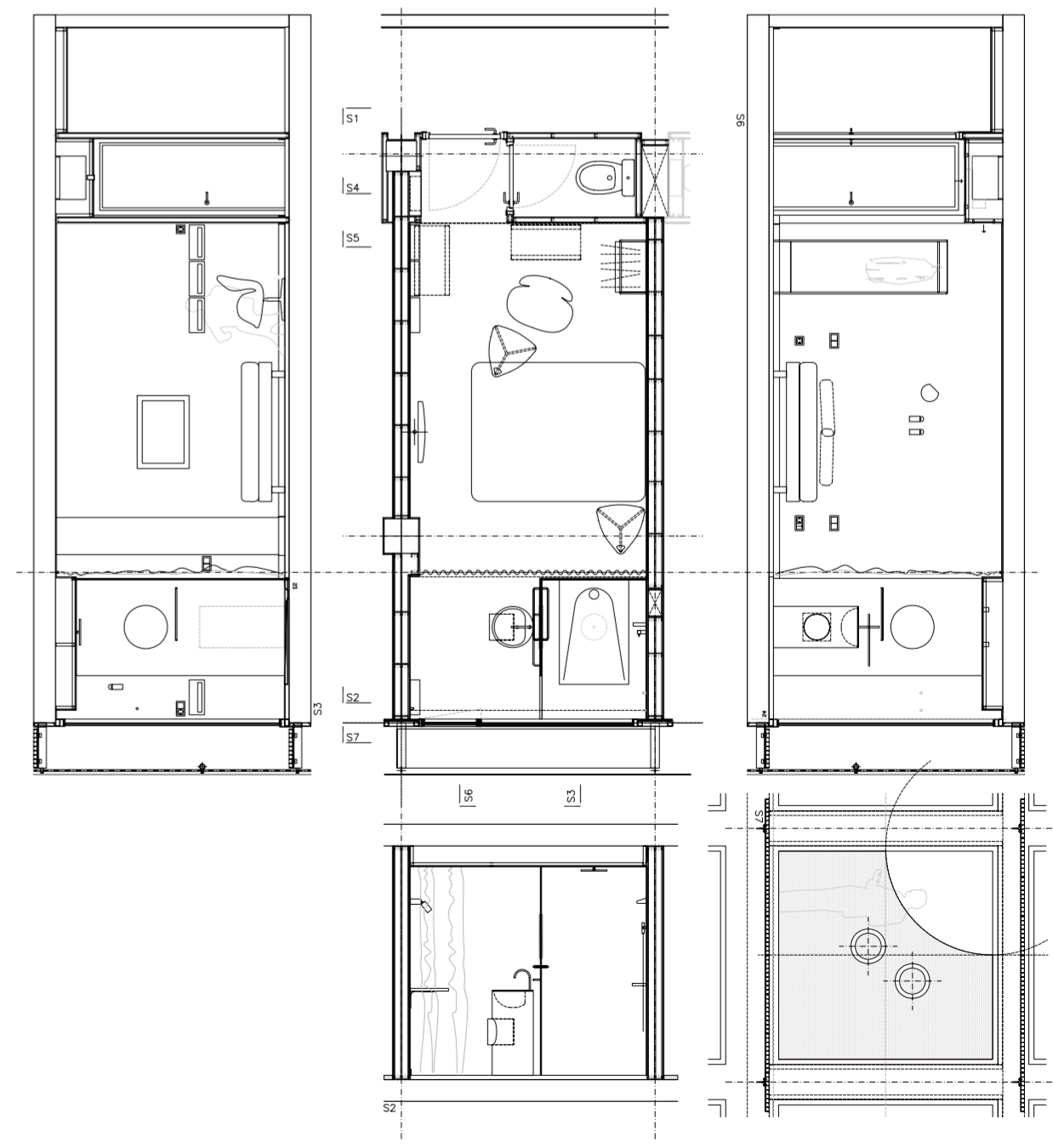
HABITACION DUPLEX (PLANTA BAJA)

设计师最初采用了两种经典设计策略：聆听这片土地的故事与询问用户的感受。可以进一步解释为：用耳朵聆听这片土地上由建筑自身所讲述的故事。换句话说，设计的目的是要保护这具有历史意义的外墙（虽然官方并没有要求对它进行保护），并在它和相邻建筑物的共用墙之间建造这家酒店。酒店房间的布局被设计成书架的模样。同时，为了在公共区里增添一些具有吸引力的布景，设计师借用了属于同一历史时期并位于极度拥挤的旧住宅区里的井元素。在齐整且静态的外墙里布置的是传统客房，而其他几面外墙却充满了一定的复杂感和变化感，一张巨型的外衣能够将新建筑上的日光反射出去。

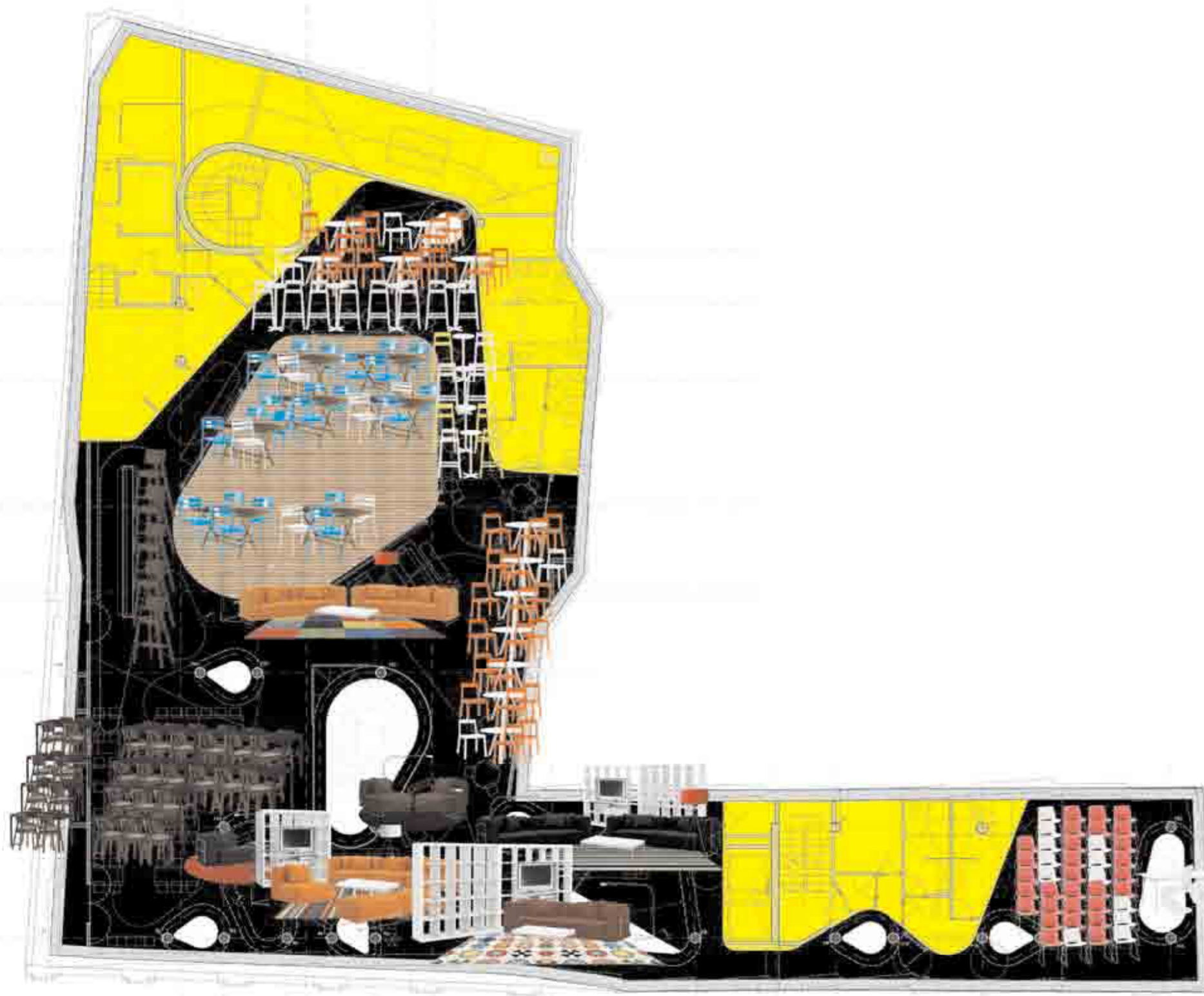
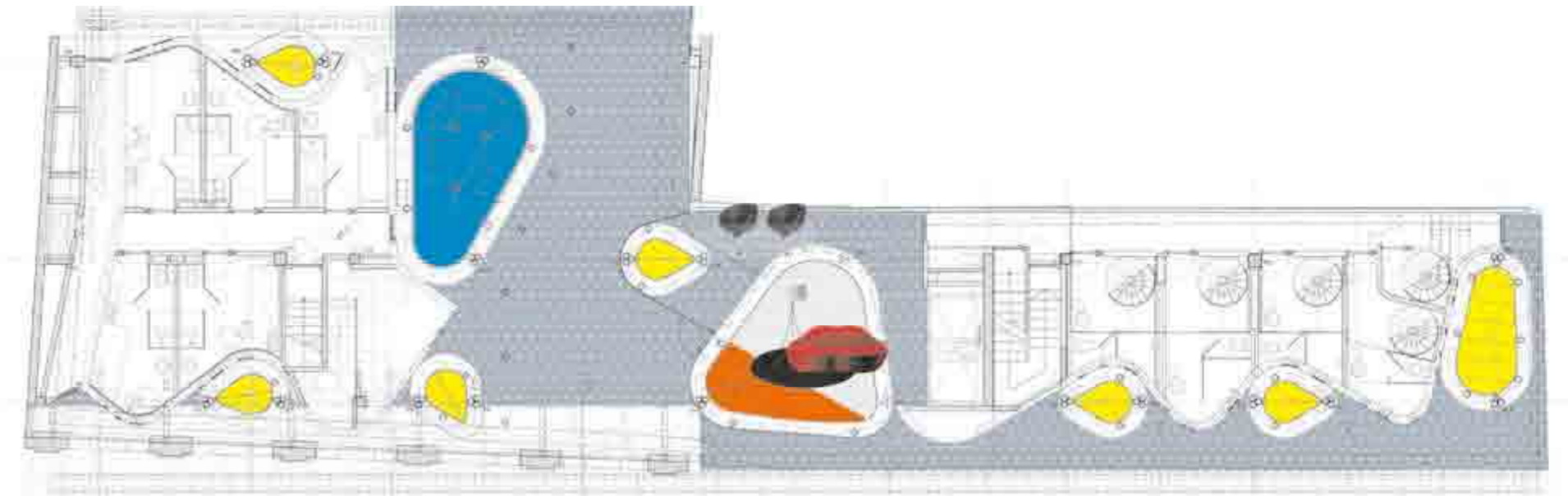
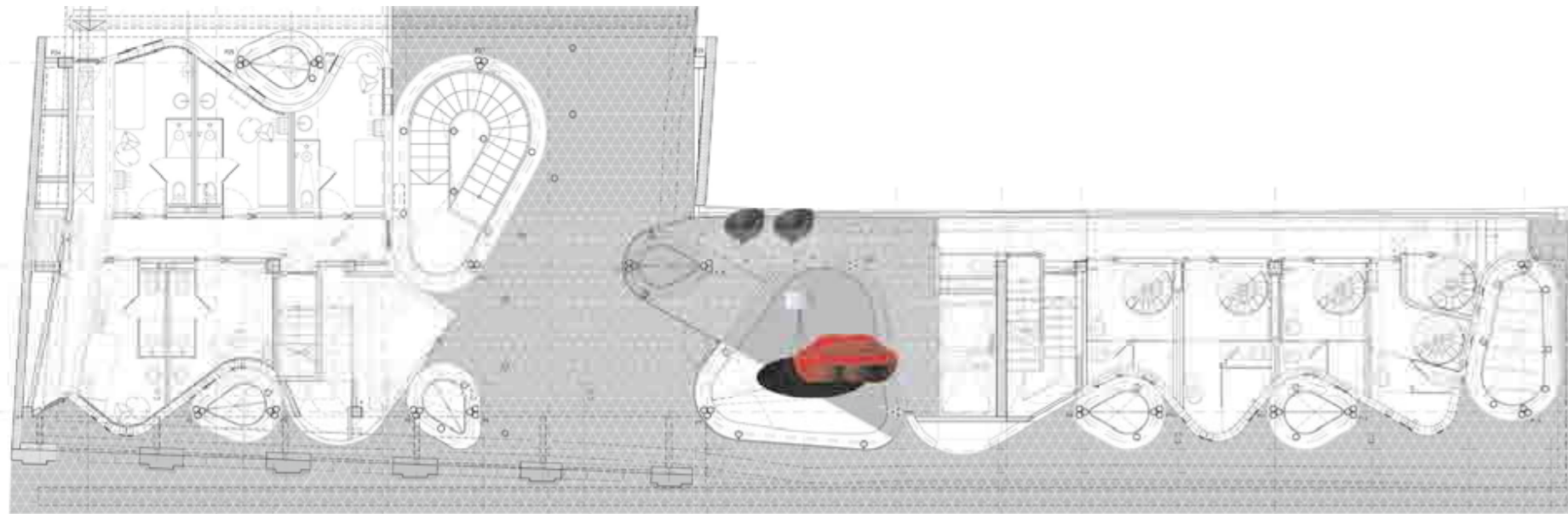
设计师在对空间进行规划的同时，也对其他功能进行了整合。深色的外墙述说着建筑以前的故事，同时也是与执法部门和许可权审批部门进行磋商时的筹码。“是的，先生”“好的，先生，马上。”为了让建筑看起来是凹进地里的，在这个拥挤如迷宫的小区中还建了一条走廊和一口内部天井。通过跟法律部门协商，可以在一层设置房间。这样，阳光可以完全照射进来，将大楼设计成错层式，解决了这个特别群体建筑物的私密性。

在白天，覆盖在建筑上的表皮可以在光线的照射下于室内和室外产生不同的效果（当然，室内外的采光条件也在不停地发生变化），这也体现了与周围建筑物融合在一起的设计宗旨。建筑的表皮不仅可以随着季节的变化而变化，还可以过滤掉白天不同的自然光和晚上的人造光，这样可以节约在财力方面的投入。

当问及用户的使用感受时，他们的回答是：在酒店的客房和公共区域，人们的感受是不一样的。酒店的公共区域位于街面的下方，虽然每个区域的功能和氛围有所不同，但都充满着温馨与舒适。设计师用各式各样的窗体、颜色和家具对建筑物进行装饰，虽然从外面看不到，但也为整条街道增添了活力。与之相反的是，客房的室内设计比较简约，方便客人快速适应新环境。浴室紧挨着墙面，可以直接与外面街道互动。而墙面外的表皮含有乙烯基材质，可以有效地阻挡来自外面街道的视线。



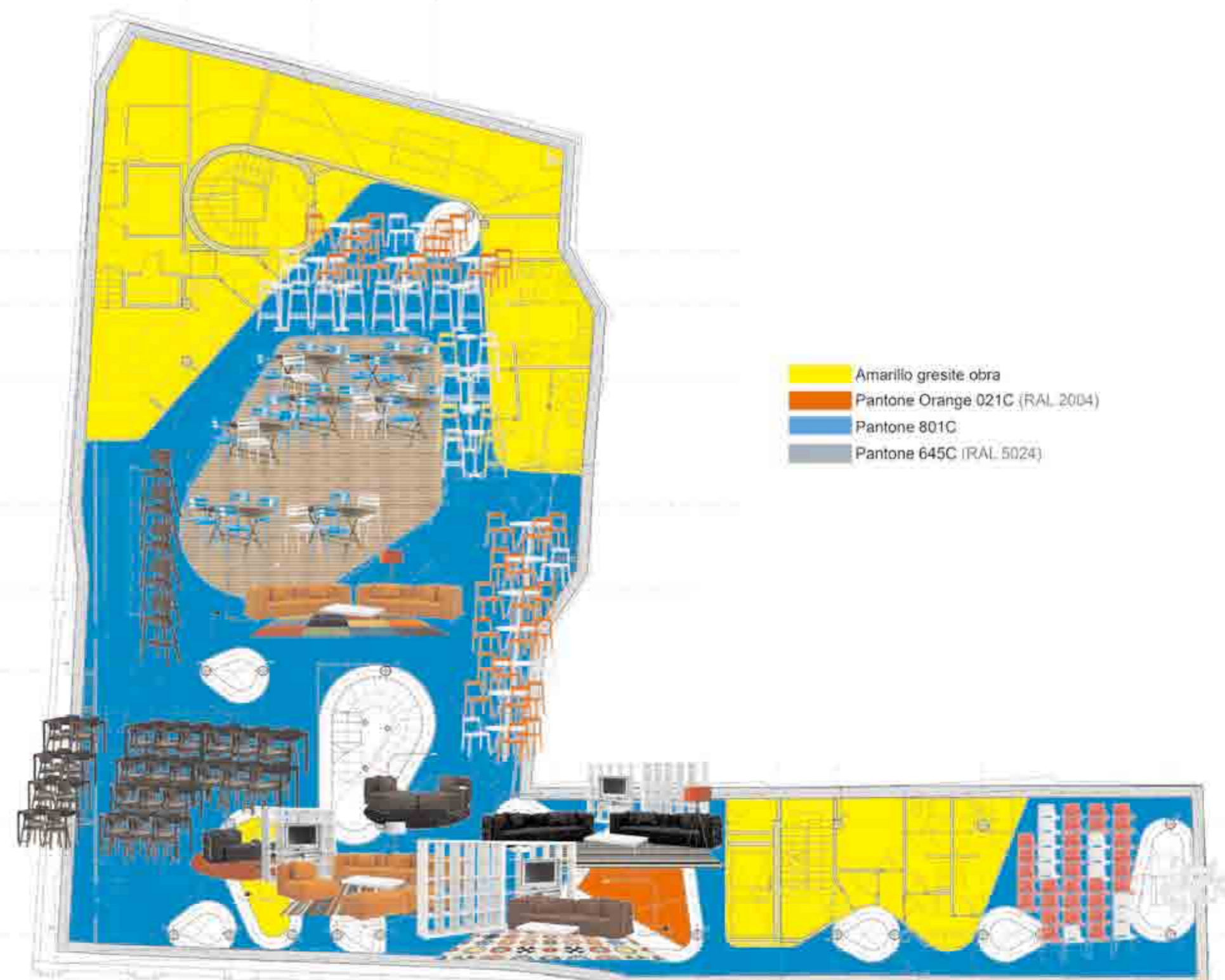
HABITACION TIPO(PLANTA Y ALZADOS)



PLANTAS SUELOS

0 1 5 10

PLANTAS SUELOS



Amarillo gresite obra  
 Pantone Orange 021C (RAL 2004)  
 Pantone 801C  
 Pantone 645C (RAL 5024)

PLANTAS TECHOS

0 1 5 10

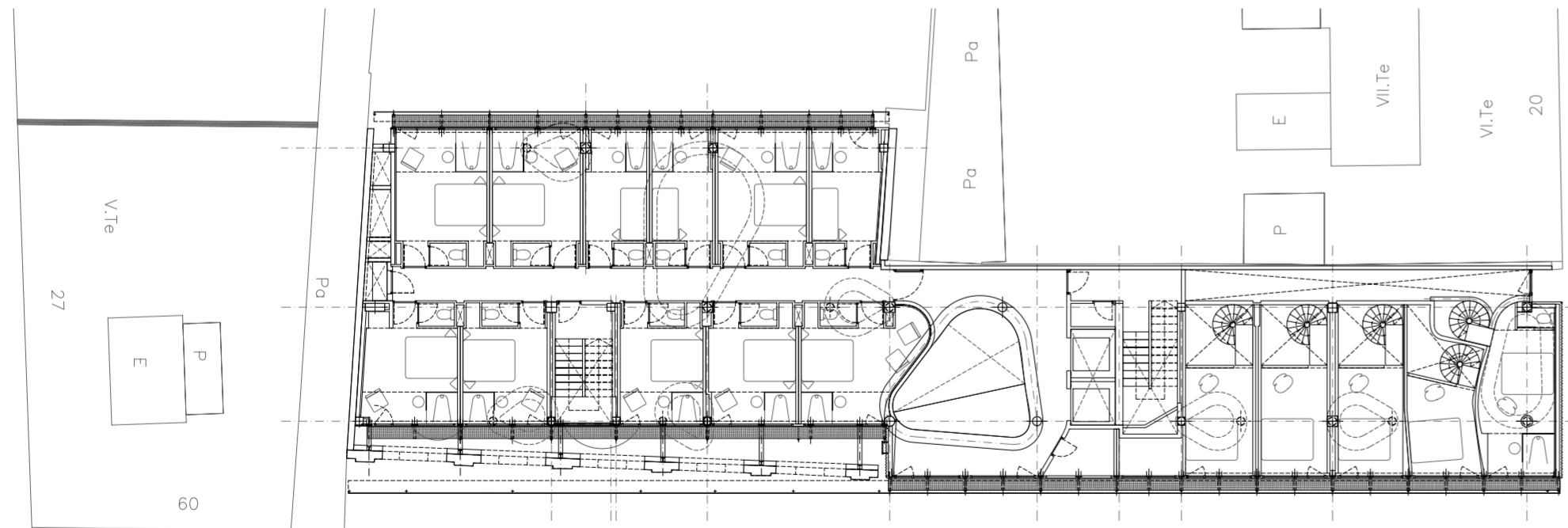
PLANTAS TECHOS

## HABITACION TIPO(DETALLES)

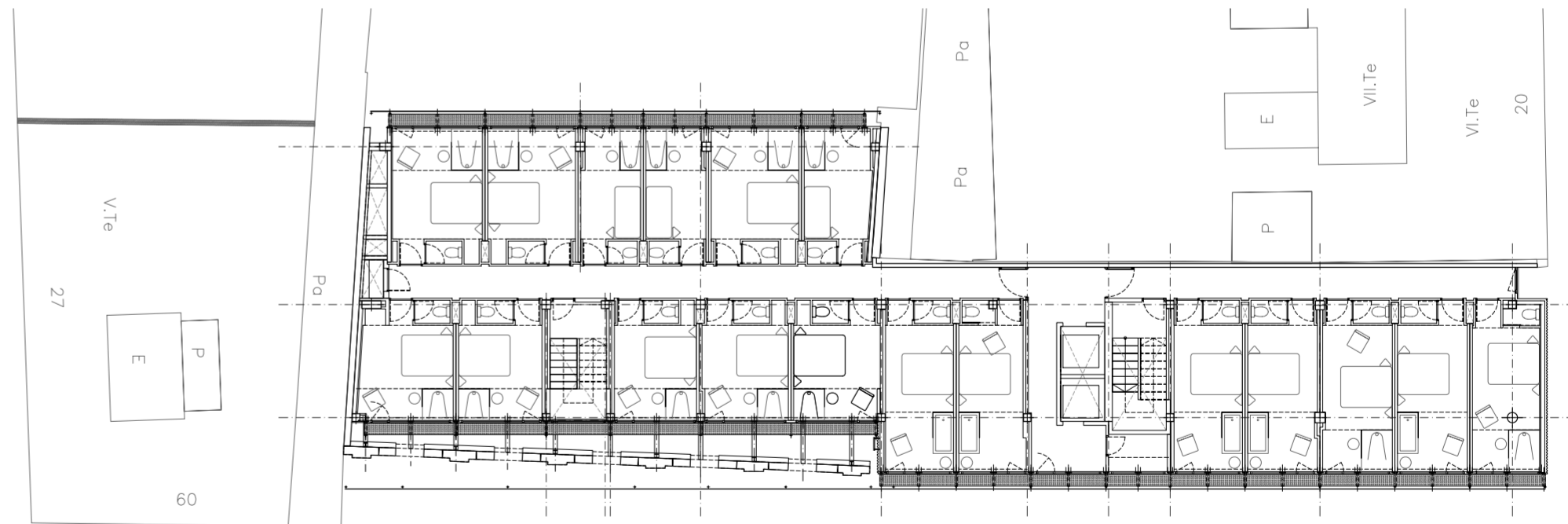
### HABITACION TIPO (PLANTAS)

## PLANTA INFERIOR

## PLANTA BAJA



PLANTA BAJA SUPERIOR



PLANTA TIPO