

HOTEL ACTA MIMIC BY EQUIP

Where **Barcelona, Spain**
Opening **July 2010**
Client **Inversions Riera Sant Miquel**
Designer **Equip** → p.582
Floor space **4744 m²**
Capacity **92 rooms**

A bold palette pinpoints an eclectic Barcelona hotel.

Photos **Adrià Goula**

Opposite The mural-clad rear façade overlooks an organically-shaped opening that offers a glimpse into the hotel's lower level.

The exterior façade has a mural by local artist Héctor Francesch.





Behind glass doors at street level is the hotel's yellow mosaic-tiled reception desk.

A look back at history revealed that a stately theatre once stood in the midst of the maze of streets known as the Raval in Barcelona. Since 2011 the Hotel Acta Mimic has called the building home, following its transformation by architecture practice Equip.

The designers decided to preserve the historic façade, more for the sake of sentimentality than for any aesthetic considerations. Guests approaching the hotel catch sight of a gigantic polyester screen featuring a mural by local artist Héctor Francesch. The main entrance is linked directly to a patio, where another of Francesch's works covers the hotel's rear façade. The playful graphic façades give way to a splendidly retro static lobby with exposed concrete, bold colours and 1970s-style furnishings. A spiral staircase on one side of the lobby area lends access to a lower-level lounge, and on the other side guests find a small reception area.

Compared with the colourful public spaces, the rooms in the hotel are more minimal and decidedly functional. By pushing the shower towards the window and framing it with glass, the designers have achieved a light, airy feeling seldom found in tightly packed, budget hotel rooms. For the rest, guests find simple beds wrapped in white cotton sheets in their rooms, offering a place to relax while watching TV on a large flat-screen high on the wall.

The hotel, albeit a place of rest for the tourist, seeks to remain ultra urban, its interior peppered with a dose of the exterior, with objects and combinations in the public areas and views of the street from the rooms. Hence the building is akin to a door onto the street and, in turn, onto the hidden, private and heterogeneous parts of a historic district. ●



From the reception area, guests can look down into the communal seating area in the basement.

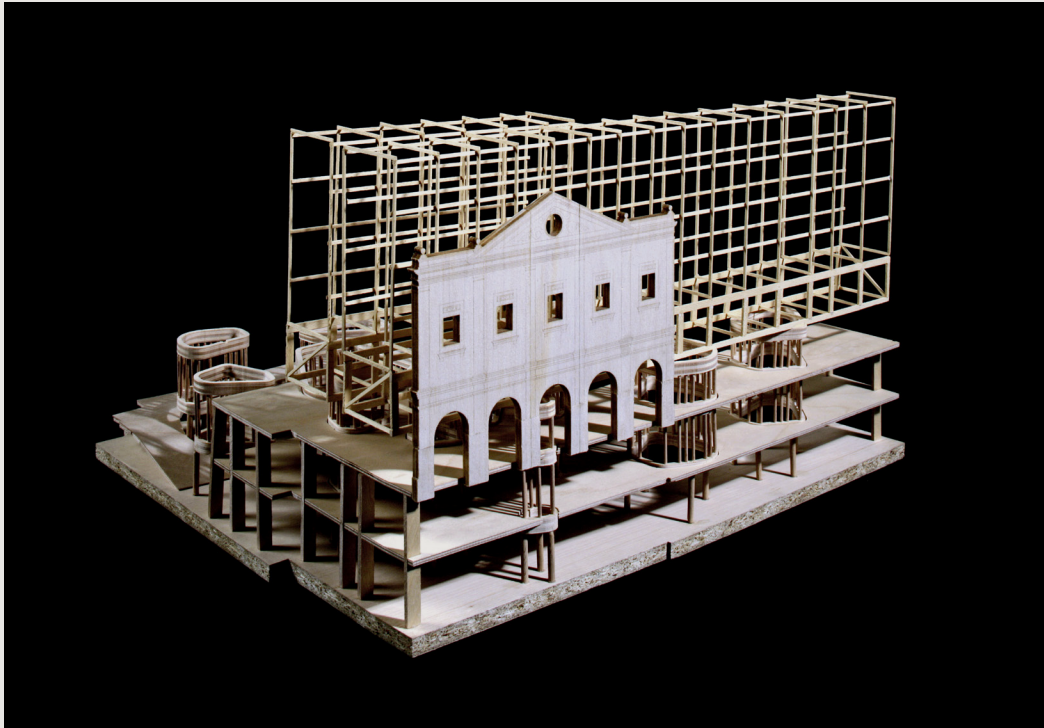


The interior is a conglomeration of curved lines, with glass-lined stairwells that offer clear sight-lines across the entire basement level.

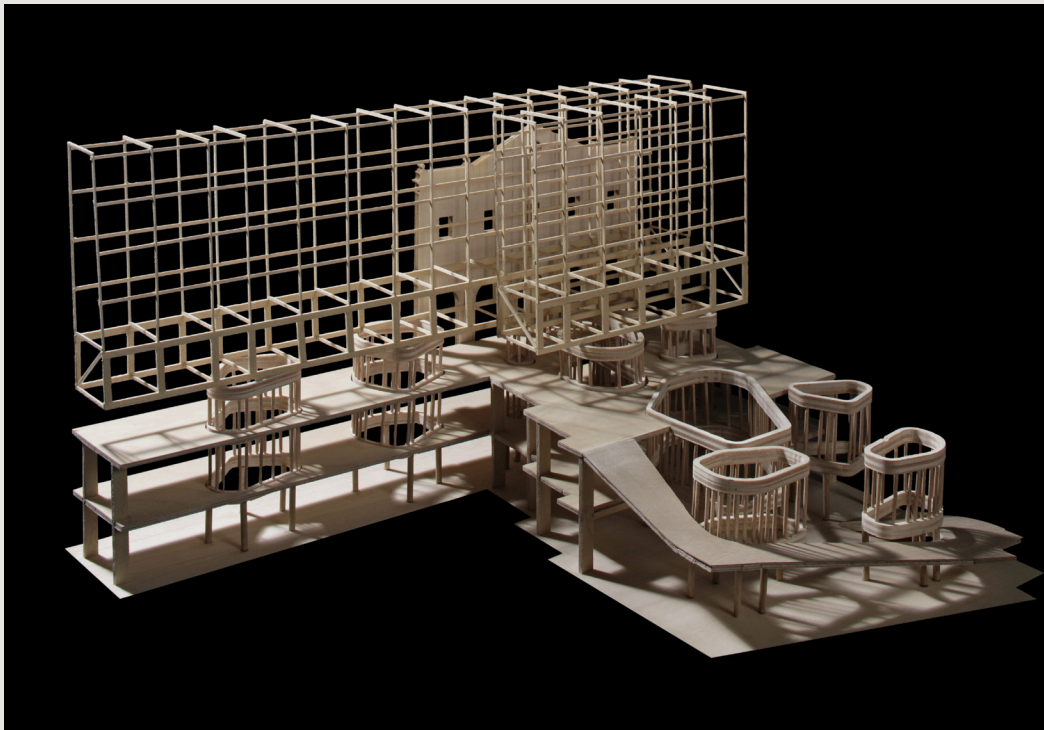
THE COLOURFUL PUBLIC SPACES ARE IN CONTRAST WITH THE MORE MINIMAL GUEST ROOMS



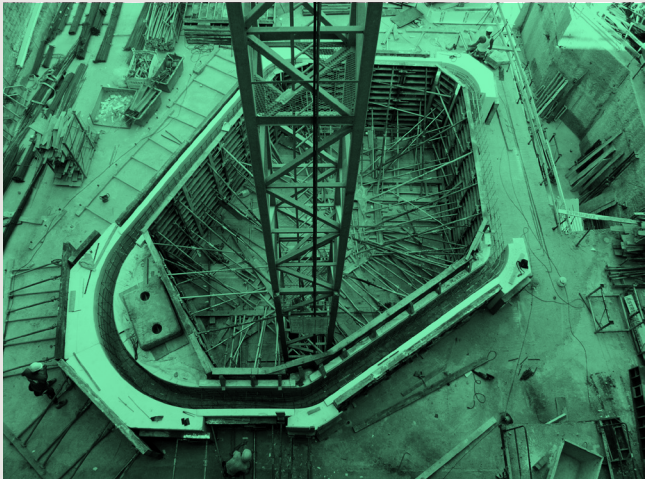
In contrast to the public spaces in the building, the guest rooms have an almost entirely white décor.



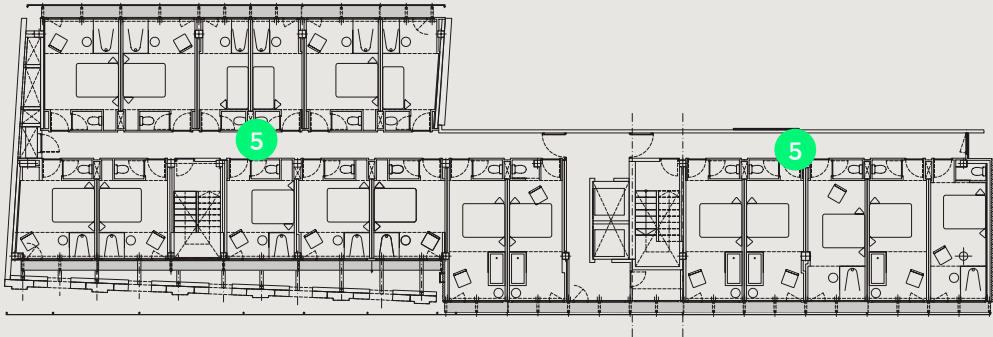
Model of the hotel plot showing the front and back elevations.



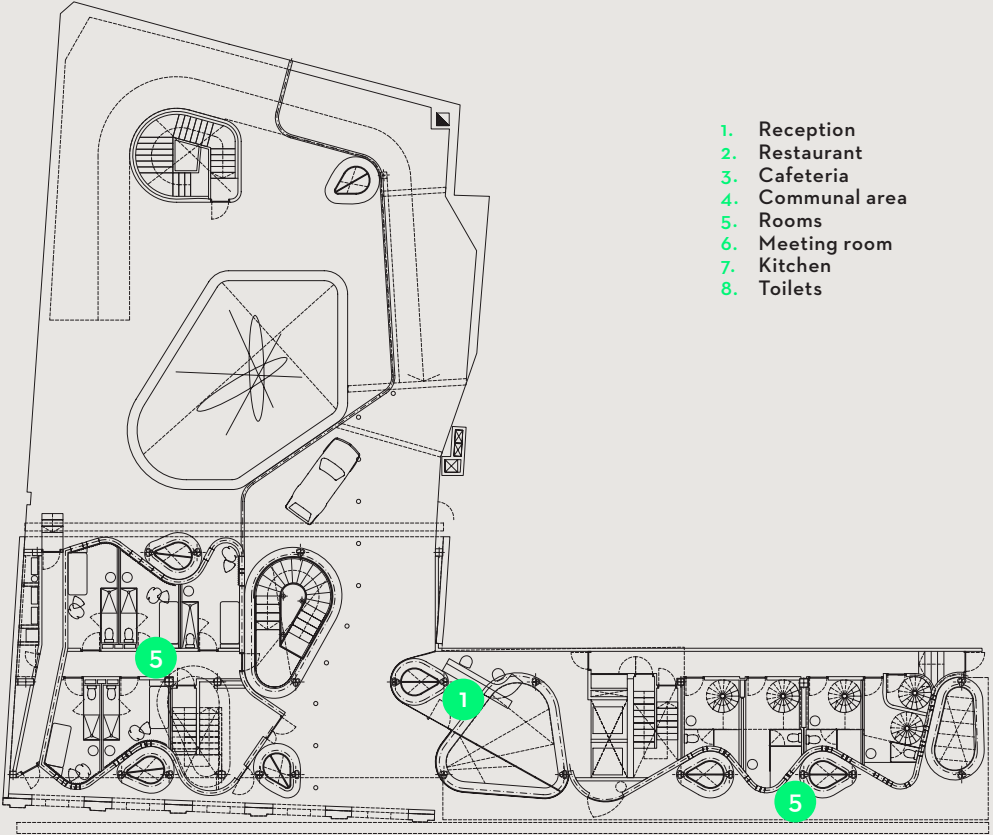
Construction photos of the main stairwell being installed.



Upper floor



Ground floor



- 1. Reception
- 2. Restaurant
- 3. Cafeteria
- 4. Communal area
- 5. Rooms
- 6. Meeting room
- 7. Kitchen
- 8. Toilets

Basement

