



HOTEL ARC DEL TEATRE

HOTEL & HOTEL RESORT
» RESORT » DETAIL » MINI

Design EQUIP · Xavier Claramunt, Martin Ezquerro, Pau Rodríguez, Marc Zaballa (www.equip.com.es)
Design Team Yago Haro, Miquel de Mas, Joan Cuevas, Javier Luri, Ho-Sang, Anne-Sophie de Vargas, Oliver Schmidt, Carmen Barberà, Vicky Pons, Adam Mendoza, Sandra Yubero, Alex Ortiz, Hilda Compte, Oriol Bordes, Anna Ramos
Location Barcelona, Spain **Built Area** 4,744m² **Photograph** Adrià Goula **Editor** Choi Ji-hyun

설계 이쿵 · 사비에르 클라라문트, 마틴 에스케로, 파우 로드리게스, 마르크 사바야 위치 스페인 바르셀로나 면적 4,744m² 에디터 최지현



Facade



Back yard

The city still puts on quite a show. Struggling insolently with the prevailing imperative of sobriety and economy of resources, we are presenting an outrageous and exhibitionist building.

Looking back over history, it turns out that in a street very close to Parallel, but well within the maze of streets known as the Raval, and particularly known as 'Barrio Chino', there once stood a lofty theater. This building has been seen as the opportunity to build a new hotel that arrive in the city of Barcelona.

And on the subject of the building, two classic strategies are initially applied: listening to the place and asking the user. To further define this generality, we would say that one listens to the place with one's ears and talks by building between two walls. In other words, the decision was taken to preserve a historic facade, despite the fact that it is not officially protected, and to insert the building between it and the party wall of the adjacent building. The new building treats the rooms as if they were shelves, using wells, a resource borrowed from the selfsame historic buildings of the highly compact old district to afford a dramatic ambience to the common spaces, which are located below street level. The relationship of the neat and static facade which would yield, and does yield, a programme of conventional rooms, with the other facades in the area is imbued with a certain complexity and change, using a huge wrap that reflects the changing light of day on the facade of the new building.

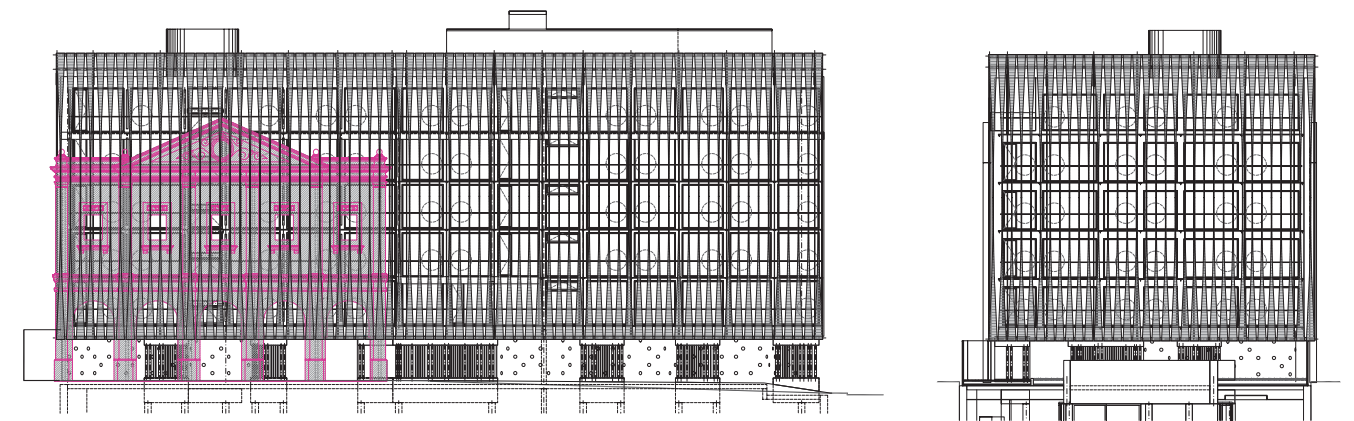
These decisions are all about space, but they are also about integration. Being very sombre and direct, we would have to say that the facade is conserved as a memory of the building that once stood there, but also as a tool for negotiating with the regulations and securing permission, yes sir right away yes sir, making it possible to recess the building on the ground floor, form a porch and open up an inner patio inside the utterly dense maze of

streets in the area. Working thus with the legislation will render it possible to locate rooms on the ground floor, in turn solving the conditions of privacy with peculiar clustering systems, with light entering radically and split-level floors.

The aim of the huge wrap covering the facade is for the building's appearance to change during the day both from inside the rooms and from the street while lighting conditions also vary on the inside and on the outside. It is a commitment to integration with the variety of the surrounding buildings. The sobriety and seriation called for by economy of resources applied in the construction of this building is granted a degree of variety by this huge wrap, which will change with the seasons and will filter the natural light of day differently to the artificial night-time light.

Asking the user, the new hotel has two different miens depending on whether you are in the room or in any one of the common areas. The public areas in the building, below street level, are treated heterogeneously to generate cosy corners and different ambiances. A variety of forms, colors and furniture is offered, as an extension of the street-level dynamism that is not actually within sight. And on the contrary, the rooms are imbued with sobriety to make for easy adaptation to the tourist's decisions. From the inside of the room a direct visual relationship is established with the street through the shower area, located on the facade, and the huge wrap which, with the help of vinyl, protects it from the eyes of the street.

The hotel, albeit a place of rest for the tourist, seeks to remain ultra urban, peppering the inside with a dose of the outside, with objects and combinations in the public areas and views of the street from the rooms, hence the building is akin to a door onto the street and, in turn, onto the hidden, private and heterogeneous parts of a historic district.



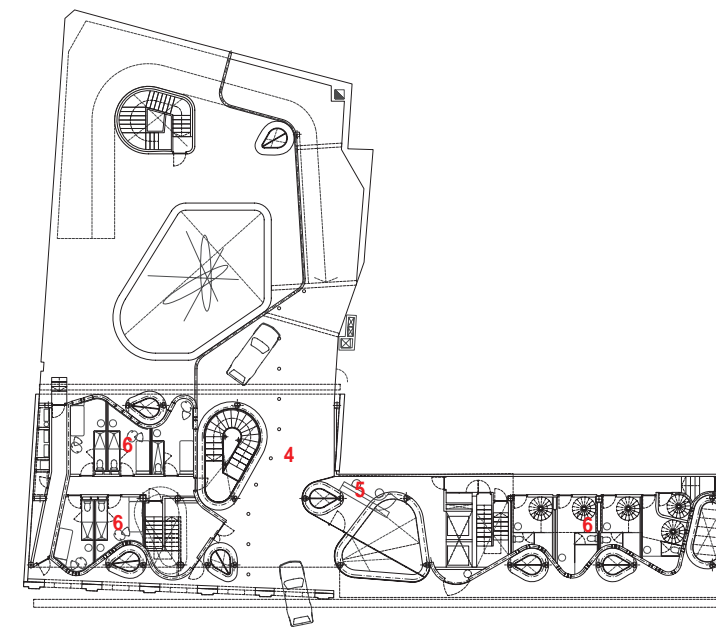
Elevation



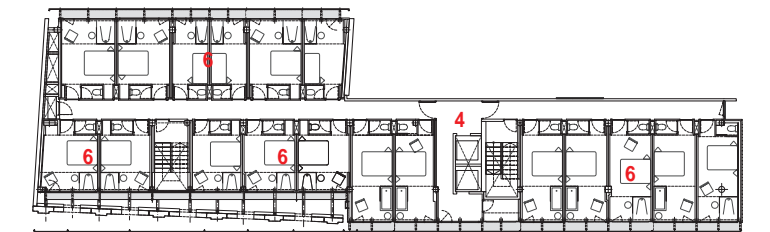
General view of 1F



Staircase



1st Floor plan



3rd Floor plan

- 1. Restaurant
- 2. Terrace
- 3. Lounge
- 4. Hall
- 5. Reception
- 6. Suite

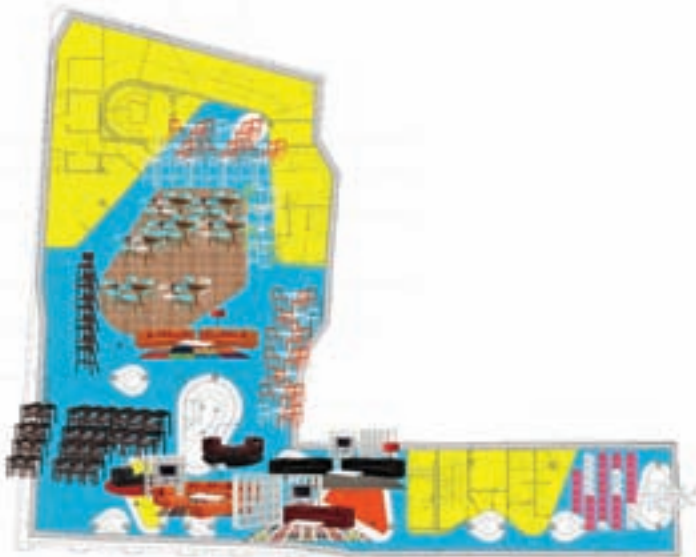
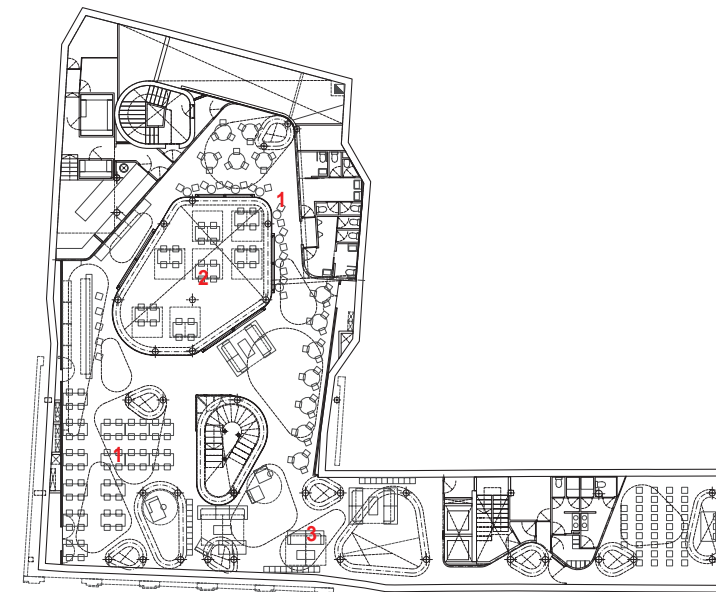
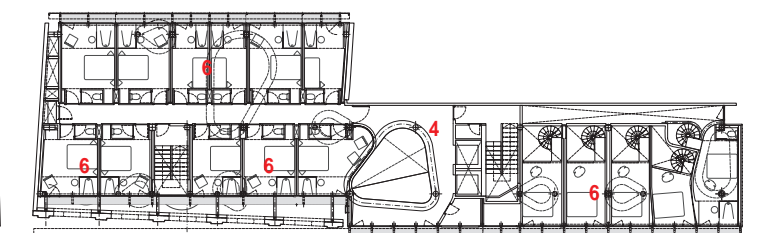


Image map



B1 Floor plan



2nd Floor plan





Reception in 1F



Lounge in B1F

스페인의 바르셀로나에서 라발이라고 알려진 미로같은 거리, 그중 높은 극장 건물들이 세워진 바리오 치노라는 거리에 호텔 아르크 델 페아드레가 세워졌다.

디자이너는 장소의 특성을 파악하고 지역만이 가진 특수성을 살리는 고전적인 전략 아래 한 때 이곳에 있었던 건물을 기리고자 남겨졌던 파사드를 그대로 보존하도록 계획했다. 이 유구한 역사를 지닌 파사드에는 새로운 거대한 외피가 더해져 낮 동안 객실과 거리에서 내려다보이는 건물의 외관에 변화를 주고 있으며, 동시에 내·외부의 조명조건을 다양화하여 주변 건물의 다채로움을 그대로 이어갈 수 있도록 하였다. 계절에 따라 변화하는 외피는 내부공간으로 햇빛을 유입해 획기적인 방식의 채광이 가능하게 된다.

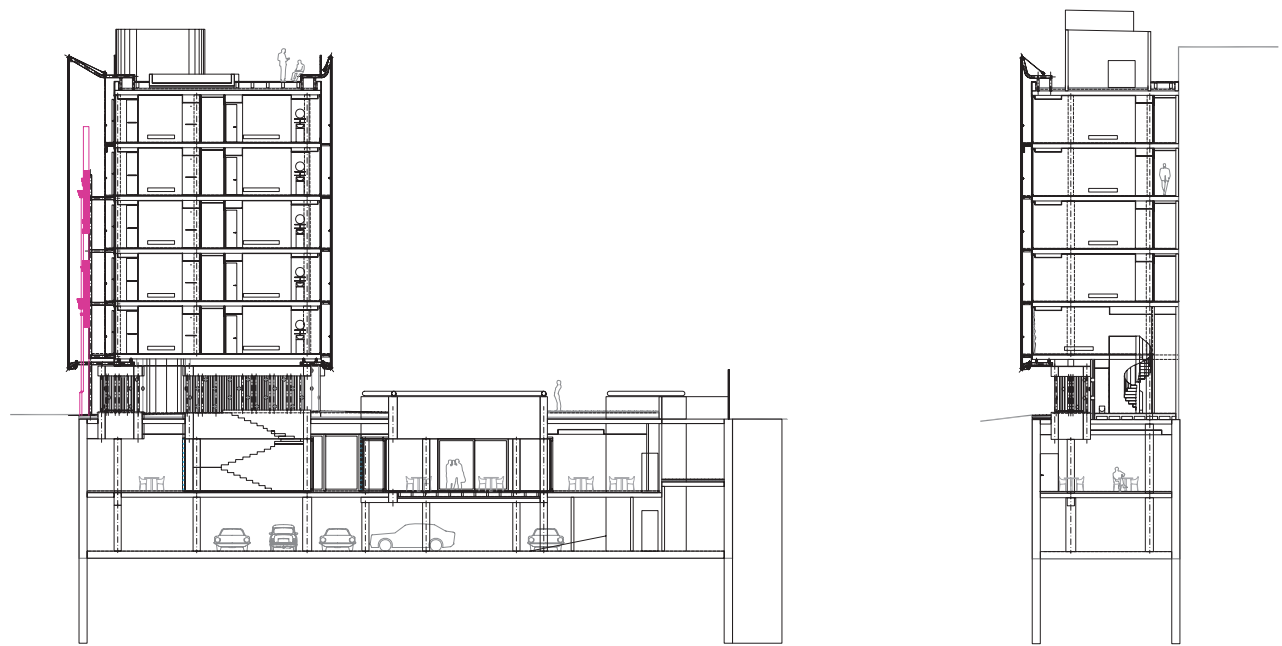
지하에는 공동구역이 배치되었다. 개방된 안뜰을 통해서도 진입할 수 있는 이곳은 각 공간을 임의로 분리하고 각각 다른 콘셉트의 설계를 적용하여 아늑한 모퉁이, 다양한 분위기를 조성하고 있다. 여기에 다채로운 형태와 색상의 가구는 거리의 역동성을 실내로 끌어들이며 극적인 분위기를 더하고 있다. 반면, 객실 층은 보다 합리적인 계획을 선보인다. 객실 내부의 파사드 쪽으로 샤워 공간을 배치하여 풍경이 내려다보이도록 하였으며 반대로 거리에서는 객실이 보이지 않도록 외피에 합성수지를 사용하여 보다 프라이빗한 공간을 만들어준다.

이곳은 관광객에게 쉴 곳을 제공하는 일차적인 목적 이외에도 외부의 움직임, 공동공간과 객실에서 바라보는 거리의 풍경을 통한 초 도시적인 장소라 할 수 있으며, 거리로 향하는 문이자 역사지구 안에서 살아 숨쉬는 내밀하고도 이질적인 공간이라 할 수 있다. 또한, 지나치게 치장된 도시의 외관을 지양하고, 자원을 절제하고 절약해 자연친화적인 건물을 만들어 내려는 디자이너의 숨은 의도가 더해져 더 멋스러운 공간이라 하겠다.





Hall in 2F



Section



Suite - bedroom



Suite - bathroom

